

HUNTSMAN®

Log Analyser



Much more than compliance

With growing pressure to comply with tighter regulations and desire to improve security, there is growing need to log all system activity and transactions, not just most of them. In the event of a breach, this is vital, if reliable status reports and reproducible audit trails are to be available.

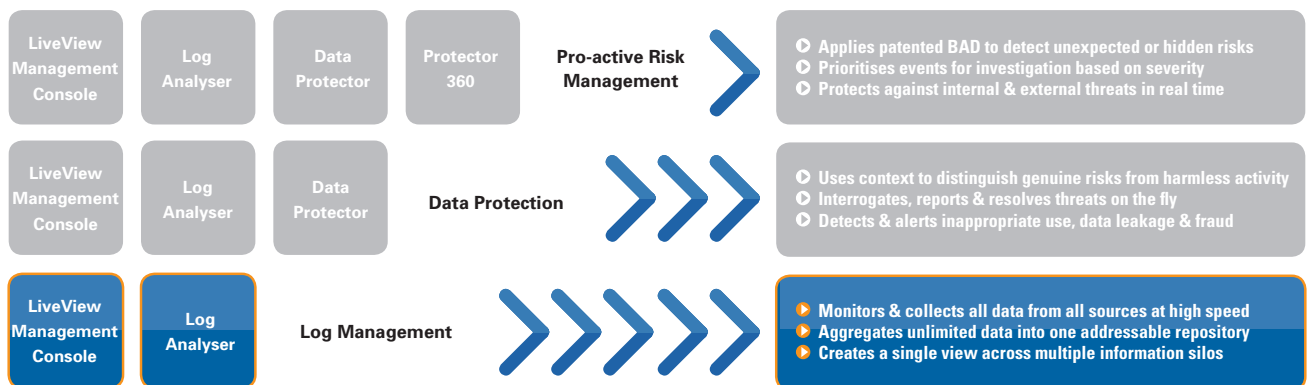
Normally, when a breach occurs, the process begins of piecing together historical events to explain what happened last week, last month or last year. In this instance, you need to be sure that the log data collected is complete and that any forensic replays reflect accurately the historical events in question. It's also important to see the links between seemingly innocuous and unrelated events. Huntsman® LOG ANALYSER was specifically designed to address these requirements: it collects log data from any source or process and stores that information in an easily searchable format, to quickly answer the question "what happened?".

With the audit log information already collected and ready for analysis, LOG ANALYSER interrogates the information and resolves threats or non-compliant activity on the fly. Unlike alternative solutions, LOG ANALYSER is able to both collect the data and help you make sense of it. In addition, LOG ANALYSER enables non-compliant activity to be remedied with timely investigation and resolution of security and compliance breaches, using its LiveView interface.

"With all our ICT activities now monitored from a central point, we have a single data repository and, rather than constantly fighting fires, we can prioritise our remediation efforts based on their potential impact on the business as a whole."

Compliance Manager - Global Financial Institution

Huntsman® Intelligent Security Suite



Intelligent Security. We invented it.

Tier-3 
www.tier-3.com

HUNTSMAN®

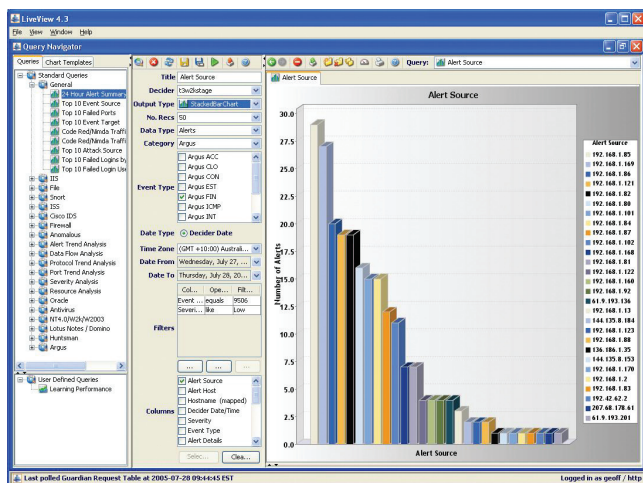
Log Analyser

Flexible not just modular

LOG ANALYSER is the cornerstone of the Huntsman® Intelligent Security Suite. It provides both flexible and sustainable compliance management and ability to easily expand to meet your future needs. LOG ANALYSER stores logs from all network devices, operating systems, databases and applications in a central repository for easy analysis, reporting and forensic investigation.

Log Analyser sees threats others can't

Unlike many simple logging tools, LOG ANALYSER's design doesn't limit the scope of data types, analysis types and management outcomes. If the monitoring of new data sources is mandated by regulatory or policy requirements in future, LOG ANALYSER's flexible data capture and analysis capabilities seamlessly expand to deliver comprehensive yet broader surveillance and control.



The entire network at a glance

The LiveView management console is a single-view command and control window available in dashboard- or browser-based format for operational and business users. LOG ANALYSER makes continuous compliance simple by generating automated reports for all major compliance and audit requirements. It also delivers real-time monitoring and control, making

incident investigation and remediation easy, with LiveView providing a complete picture of every event. Non-compliant events can be managed and their impact minimised by using Huntsman®'s own workflow system, or by integrating Huntsman® with your existing workflow systems.

Integrated not just added

LOG ANALYSER's comprehensive data collection capabilities provide the foundation for advanced analytics and management of complex environments. A seamless upgrade path integrating additional Huntsman® modules delivers a return on investment unrivalled by any other solution.

The sheer volume of information to be managed can overwhelm many data logging devices. Huntsman®'s High Speed Event Stream Processing technology provides full data assurance by avoiding the data loss that occurs when event traffic exceeds the capacity of other solutions. LOG ANALYSER's high volume, autonomous analysis architecture delivers sustainable and reliable compliance management.

Based on its experience in high volume environments the Huntsman® solution is available as a grid architecture. This means that, using multiple commodity-based hardware units, it can scale to any size or configuration simply and economically. This avoids both the inflexibility of appliances and the rigid constraints of proprietary data storage formats.

Commitment not just experience

Huntsman®'s flexible adoption model lets you add functional modules when needed, without disruption to your organisation. Because the platform is easily adapted to meet new business or regulatory demands, Huntsman® ensures that you are as well prepared for tomorrow as you are for today.

See also:

- ▶ [Huntsman Overview](#)
- ▶ [Huntsman Data Protector](#)
- ▶ [Huntsman Protector 360](#)

AUSTRALIA

Tier-3 Pty Limited

L2, 11 Help Street
Chatswood, NSW, 2067
info@tier-3.com
+61 2 9419 3200

UNITED KINGDOM

Tier-3 Pty Limited

No. 1 Cornhill
London EC3V 3ND
info@tier-3.com
+44 203 178 3338

JAPAN

Monet

Ishikawa-Kosan Building 4F 4-7-5
SotokandaChiyoda-ku
Tokyo Japan 101-0021
info@tier-3.com
+81 3 5256 5171

